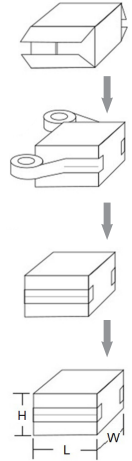


UNIFORM CARTON SEALER

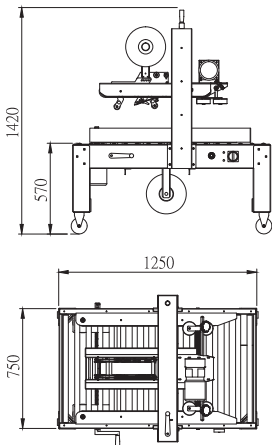
CHS-6603



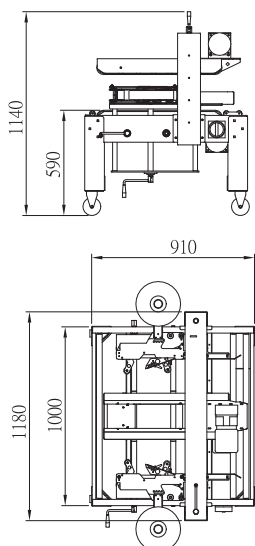
CHS-6604



CHS-6603



CHS-6604



CHS-6603 TOP AND SIDE BELT CARTON SEALER

CHS-6603 FEATURES

- Fast and easy box size changes
- Industrial strength side and top belts
- Top squeezers push top flaps together on overfilled cases
- Locking casters for transportation within plant
- Dual mast for tape head stability
- Plug-in and go operation
- Stainless steel roller table
- Three (3) 1/4HP drive motors, suitable for packing heavy cases

CHS-6603 TAPING SPECIFICATION

Sealer Type	Top and side belt carton sealer
Power Supply	1 phase, 110V/220V, 50/60HZ
2" Tape Sealing Size	L150mm - Infinite, W110 - 500mm, H110 - 500mm
3" Tape Sealing Size	L150mm - Infinite, W135 - 500mm, H110 - 500mm
Tape Overlap	L60±5 (mm) standard
Working Table Height	570-770mm
Belt Speed	20M/min.
Capacity	30 cases/per min. depending on box size and operator efficiency.

CHS-6604 TOP AND BOTTOM CARTON SEALER

CHS-6604 FEATURES

- Fast and easy box size changes
- Especially design for taping boxes in horizontal position
- Side sealing with overlapped flaps and for closing the bottom and cover of boxes
- Adjustable side-guiding rails
- Dual mast for tape head stability
- Adjustable leg extensions
- Stainless steel roller table
- Plug-in and go operation

CHS-6604 TAPING SPECIFICATION

Sealer Type	Top and Bottom belt carton sealer
Power Supply	1 phase, 110V/220V, 50/60HZ
3" Tape Sealing Size	L150mm - Infinite, W250 - 650mm, H110 - 250mm
Tape Overlap	L60±5 (mm) standard
Working Table Height	590-790mm
Belt Speed	20M/min.
Capacity	30 cases/per min. depending on box size and operator efficiency.
Air Requirement	None

