

STRETCH WRAPPING MACHINE

Feature

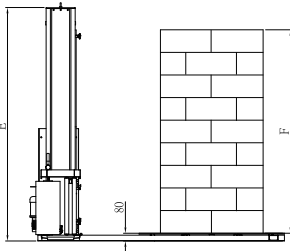
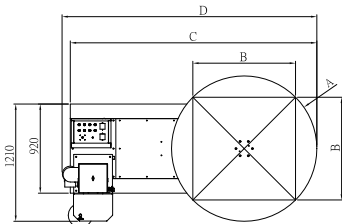
- PLC control panel.
- Photoelectric Sensors detect photo-optical pallet height.
- Separate top, bottom & up-down wrap count selectors.
- Film tension control adjustment on the control panel.
- The film carriage with brake to alter the film tension easily.
- Turntable speed and film carriage up / down speed could be adjusted by frequency converter.
- Cycle pause capability goes back to the original start position after wrapping cycle finished.
- Soft start / stop and smooth wrapping prolongs machine's life span.
- Heavy duty chain drives film carriage and turntable quiet and safe.
- Adjustable film feeding speed by separate AC drive motor.
- The bottom of film rack adapt safety limit switch.

CHW-SERIES

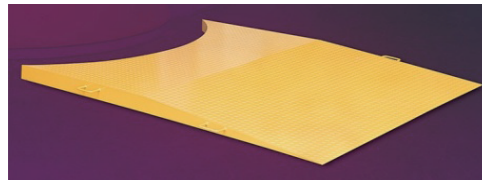
STRETCH WRAPPING MACHINE



CHW-SERIES



FILM PRE-STRETCH SYSTEM



ACCESS RAMP



TOP PRESS PLATE

Specification

Model	CHW-1521	CHW-1821	CHW-1524	CHW-1824
Power Supply	220V/380V ,1Φ / 3Φ , 50/60HZ			
Power Consumption	1.3 KW			
Wrapping Height	2100mm		2400mm	
Turntable Diameter	1500mm	1800mm	1500mm	1800mm
Turntable Height	80mm			
Turntable Loading Weight	Max. 2000kgs (4400lbs)			
Turntable Speed	5-15 rpm (speed adjustable)			
Film Carriage Speed	5 Meter/min. (speed adjustable)			
Film Specification	PE film , I.D.:76mm , O.D.:250mm , W500mm			
Film Thickness	17-35 microns			
Control System	PLC			
Machine Size	L2630xW1523xH2410mm	L2930xW1800xH2410mm	L2630xW1523xH2710mm	L2930xW1800xH2710mm

※CHA Pack reserves the right to modify specification for quality development.